



# INTRODUCTION TO WALBRIDGE

*Safe | Reliable | Creative | Competitive*





- **Privately Owned Constructor:**
  - ▶ Founded as Walbridge Aldinger (1916)
  - ▶ Headquartered in Detroit
  - ▶ Twelve domestic office locations
  - ▶ 2010 Sales: \$1 Billion
  - ▶ 1,000 professionals
- **Services:**
  - ▶ Construction Management
  - ▶ Design-Build
  - ▶ General Contracting
- **Self-perform capabilities:**
  - ▶ Walbridge Concrete Services
  - ▶ Walbridge Equipment Installation
  - ▶ Walbridge Facility Maintenance



*George Walbridge*



*Albert Aldinger*



*Ford Dearborn Truck Assembly*



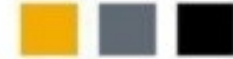
## OFFICE LOCATIONS



- DOMESTIC LOCATIONS**
- Aurora, Illinois
  - Charlotte, North Carolina
  - Chattanooga, Tennessee (JV)
  - Columbia, South Carolina
  - Detroit, Michigan
  - Kokomo, Indiana
  - LeClaire, Iowa
  - Pittsburgh, Pennsylvania
  - Salt Lake City, Utah
  - San Antonio, Texas (JV)
  - Oakland, California (JV)
  - Tampa, Florida



- INTERNATIONAL LOCATIONS**
- Mexico:
- Mexico City
- Canada:
- London, Ontario (JV)
  - Windsor, Ontario
- Middle East:
- Dubai, UAE (JV)
  - Abu Dhabi, UAE (JV)
- Brazil
- São Paulo (JV)



## NATIONAL RANKINGS

- #1 – Automotive (since 1998)
- #3 – Manufacturing
- #6 – Steel & Non-Ferrous Metal Plants
- #19 – Airports (U.S.)
- #16 – Education
- #28 – Green Contractors
- #50 – Overall (U.S.)



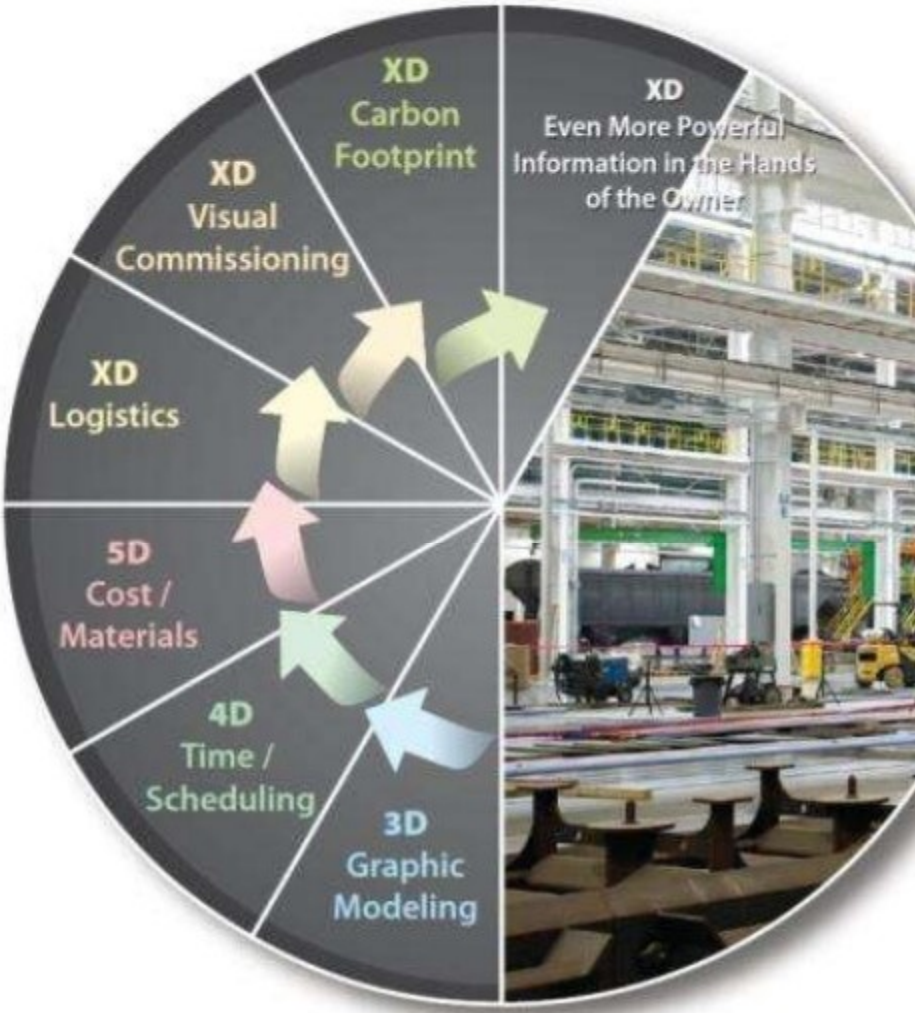
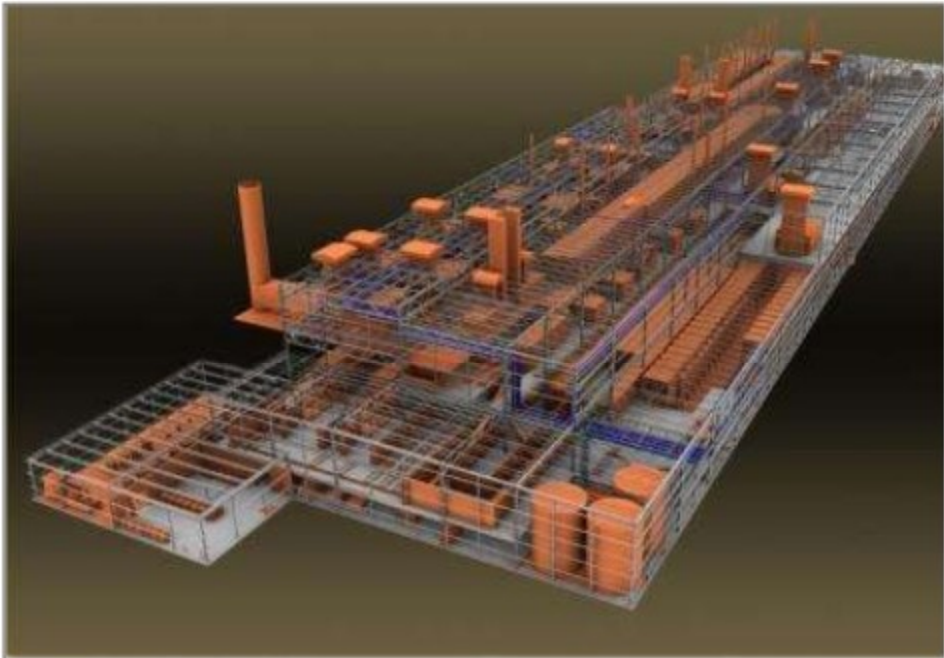
AGC Willis Award

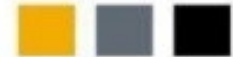
## SAFETY

	2011	2010	2009	2008	2007	2006	2005	2004
<b>Experience Modification Rate (EMR)</b>	0.60	0.58	0.57	0.53	0.69	0.62	0.53	0.45
<b>OSHA Lost Workday Incidence Rate (LWDIR)</b>	---	0.0	0.0	0.0	0.0	0.0	0.0	0.0



# BUILDING INFORMATION MODELING (BIM)





## GreenWISE Program

# GreenWISE Job Sites

The construction on Walbridge sites is planned with the benefit of the community and environment in mind. Learn more about the **Walbridge Intelligent Sustainability & Environment Program** at [www.Walbridge.com](http://www.Walbridge.com)



safety & spill control



temporary conditioning of interior space



temporary power generation



battery powered tools & equipment



preventive maintenance



subcontractor expectations



site logistics



eco-office trailer



main office and trailer city offices



temporary building and site lighting



temporary wood and formwork



fuels for construction equipment & emissions



vehicles and equipment



waste management and recycling



water use reduction



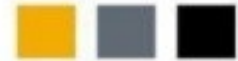
site fencing, soil erosion and temporary roads



office supplies



information technology



## CLIENTS



US Army Corps  
of Engineers®



Exelon®



DELTA DENTAL®



 Walbridge

NORTHROP GRUMMAN



CHRYSLER



EnviroFocus  
Technologies

EASTERN  
MICHIGAN UNIVERSITY



BAE SYSTEMS

EMBRAER

GreenPath  
debt solutions

TWIN CREEKS  
TECHNOLOGIES, INC.

**WE ARE WALBRIDGE  
AND WHAT WE BUILD STANDS  
FOR SOMETHING.**



**Walbridge**

**BUILT FOR GOOD<sup>SM</sup>**

**[builtforgood.com](http://builtforgood.com)**



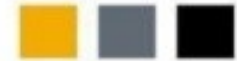


## **LEED & SUSTAINABLE**

Ford Rouge Center - Dearborn, MI



**LEED Gold**



## **LEED & SUSTAINABLE**

Lawrence Technological University – Southfield, MI



**LEED Silver**





## ***AUTOMOTIVE***

Toyota Motor Manufacturing – San Antonio, TX





**EDUCATION**

University of Michigan – Ann Arbor, MI







## ***EDUCATION***

University of Texas at San Antonio – San Antonio, TX





## **CORPORATE CAMPUS**

Delta Dental - Okemos, MI







**OFFICE**  
Compuware – Detroit, MI





## **HEALTHCARE**

Oakwood Healthcare Southshore Hospital – Trenton, MI

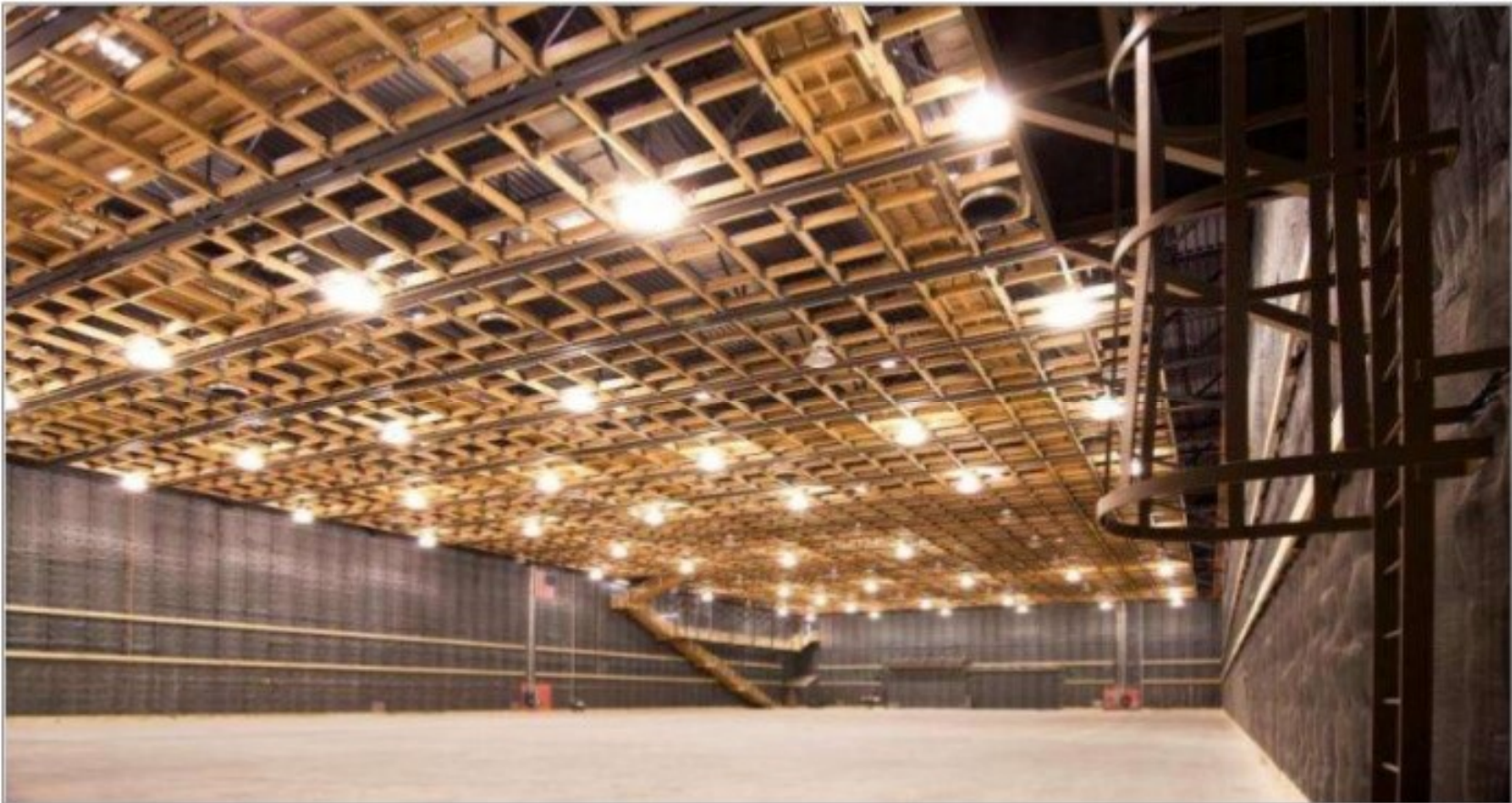






## ***ENTERTAINMENT***

Raleigh Michigan Motion Picture Studios – Pontiac, MI





## ***CULTURAL***

Tampa Bay History Center – Tampa, FL







## ***PARKING FACILITIES***

General Motors Corporation – Detroit, MI





## **GENERAL MANUFACTURING**

National Steel Car Corporation – Cherokee, AL







## **FEDERAL GOVERNMENT**

United States Army Corps of Engineers – Ft. Stewart, GA



## **RESEARCH & DEVELOPMENT**

Wayne State University - Detroit, MI







## ***WIND POWER***

Hatchet Ridge Wind Farm – Burney, CA







## **INFRASTRUCTURE**

Western Regional Water Reclamation Facility – Petersburg, KY





# AVIATION

Detroit Metro / Wayne County Airport Authority – Romulus, MI







## ***INTERNATIONAL***

Abu Dhabi Future Energy Company – Abu Dhabi, United Arab Emirates



***Pre-construction***





## ***SELF-PERFORM***

### ***WALBRIDGE CONCRETE SERVICES***

- Annual Sales: \$40 Million
- Average of 175-300 trades people
- Service throughout North America

### ***WALBRIDGE EQUIPMENT INSTALLATION***

- 130 Year Tradition
- Annual Sales: \$50 Million
- Service throughout North America

### ***WALBRIDGE FACILITY MAINTENANCE***

- Operations:
  - ▶ 78 Project Sites
  - ▶ 6 States
  - ▶ 2010 Revenue: \$36 Million
  - ▶ 500 Direct Hire Staff



*Tandem Mill Concrete Foundations*



*(Top) Global Engine  
Manufacturing Alliance  
Dundee, Michigan*

*(Left) Mill-Stand Pick*

**WE ARE WALBRIDGE  
AND WHAT WE BUILD STANDS  
FOR SOMETHING.**



**Walbridge**

**BUILT FOR GOOD<sup>SM</sup>**

**[builtforgood.com](http://builtforgood.com)**

# [http://www.walbridge.com/subcontractor\\_portal/](http://www.walbridge.com/subcontractor_portal/)

- Pre-Qualification
- **Please Select The Proper Classification**
- 
- **Subcontractor**
- A company that will provide or perform labor on a project site with or without material, tools and equipment to perform a specific task as a part of the overall project. This classification also includes Testing and/or Consulting firms that **will have onsite** sampling, testing and commissioning services.
- **All companies in this classification will perform some type of On-site Labor**
- **NEW / EXISTING USER**
- **Vendor / Supplier**
- A Company that provides goods or services **without providing** any Project onsite labor to perform a specific task as part of the overall project. This includes but is not limited to the following:
- A manufacturer, distributor, supplier of equipment, parts, raw materials (steel, lumber, concrete, etc.) or businesses that provide services like transportation, packaging, facility maintenance, rental equipment (equipment only, no labor) or commissioning services. This classification includes any other services that don't fit in the other categories.
- **These vendors will not perform any on-site trade labor as part of the overall construction or tooling project. If you do, you must refer to Subcontractor.**
- **NEW / EXISTING USER**
- **Architect / Engineer**
- A firm with **registered professional(s)** capable of designing and sealing design documents for a discipline(s) and are generally the designer of record for said discipline(s), but do not provide onsite construction labor. This does not include firms whose function is to generate shop or detail fabrication drawings for subcontractors.
- **Download Registration Form**
- **UNITED STATES**
- **CANADA**



# CONTACT

- Jackie Jackson
- Director Supplier Diversity
- 313.442.1272
- [jburnley@walbridge.com](mailto:jburnley@walbridge.com)
- Justin Owen
- Associate Business Development
- 313.442.1476
- [jowen@walbridge.com](mailto:jowen@walbridge.com)